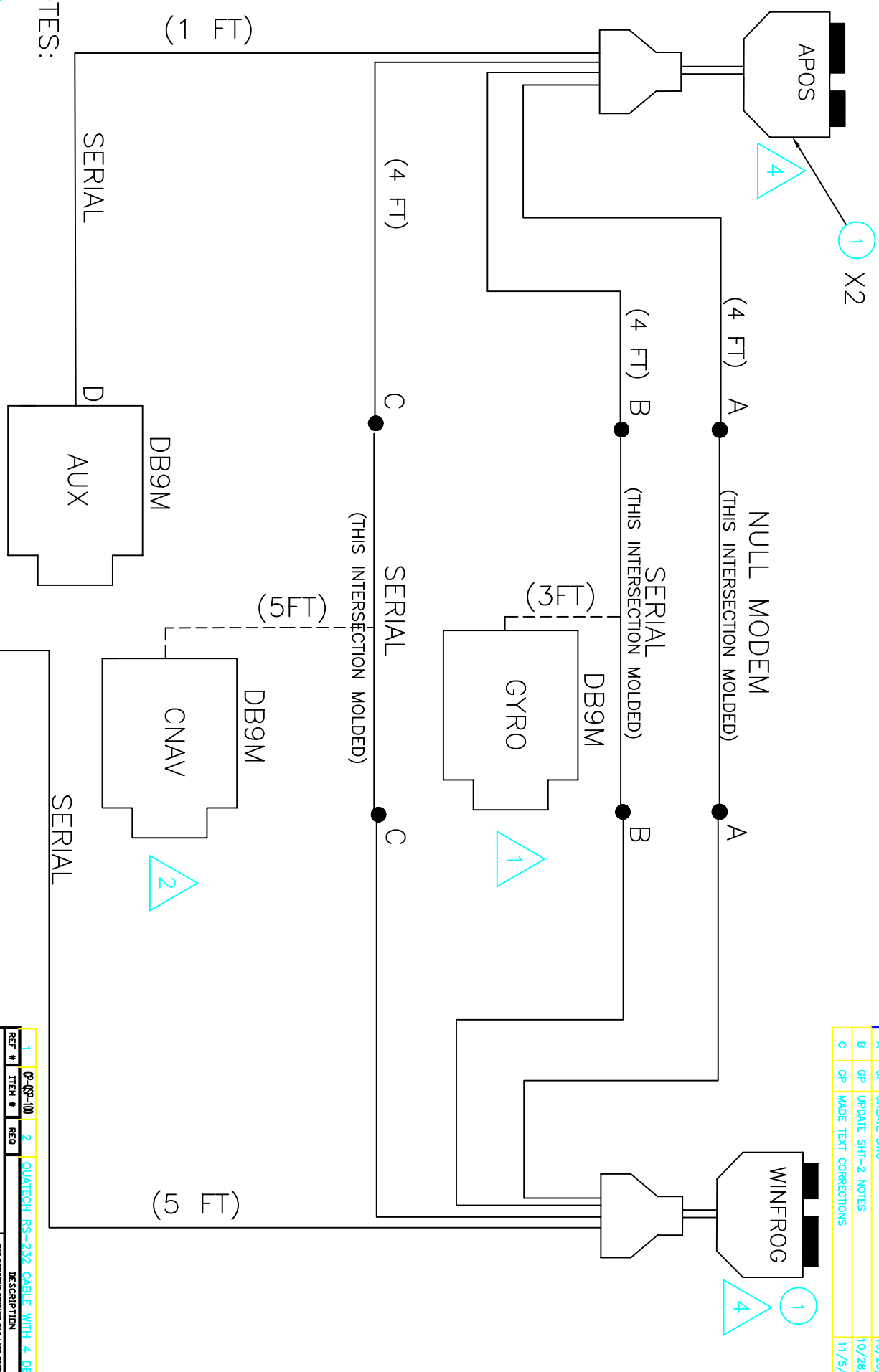


NOTES: SEE SHT-2 FOR FINAL ASSEMBLY

REVISIONS				
REV.	BY	DESCRIPTION	DATE	APPV/D
A	GP	CREATE DIMS	10/23/08	
B	GP	UPDATE SHT-2 NOTES	10/28/08	
C	GP	MADE TEXT CORRECTIONS	11/5/09	



- NOTES:
- 1 ENGRAVE "GYRO" ON RECEPTACLE (YELLOW).
  - 2 ENGRAVE "CNAV" ON RECEPTACLE (GREEN).
  - 3 ENGRAVE "PITCH" ON RECEPTACLE (RED).
  - 4 ADD LABEL FOR "APOS" & "WINFROG" AS SHOWN.

REF #	ITEM #	REQ	DESCRIPTION
1	Q-09-100	2	QUANTECH RS-232 CABLE WITH 4 DB9M CABLES

TITLE: ASSEMBLY-CABLE-MOLDED-WINFROG  
 MODEL: WINFROG/APOS  
 DRAWN BY: GP DATE: 10/23/08  
 DES. ENG. DATE: 10/23/08  
 PROD. ENG. DATE: 10/28/08  
 MFG. ENG. DATE: 11/5/09  
 REL. PROD. DATE:

UNLESS OTHERWISE NOTED:  
 INTERPRET DIM. & TOL. PER ASME Y14.5M-1994  
 ALL DIMS. ARE IN INCHES  
 ALL FINISHED SURFACES  
 TOLS: .XX \*015 .XXX \*005 ANGLES \*1°  
 DO NOT SCALE DRAWING

SCALE: NONE DRAWING NUMBER: 1139 SHEET 1 OF 2  
 REV. C